



# Multiplicity Tutorial

Ms. Downs

# Photos

Take photos using the green screen or a solid color background if possible to make less work later on.  
Take photos similar to the lighting you will use for your background image.

# Upload Your Photos



Go to the Weebly website > High School > Graphic Design > Google Folder > Multiplicity > Student Photos Sem 2 2015-16. Drag your usable photos into that folder.

# Adobe Photoshop



Launchpad



Adobe Photoshop

Open Adobe Photoshop by going to your launchpad.

# Import the Images



Background Image

Import the tutorial background image  
From the Weebly website, Multiplicity page, drag the tutorial background image to your desktop. Drag the tutorial background image to the Photoshop icon to open it up in Photoshop.

# Import the Images



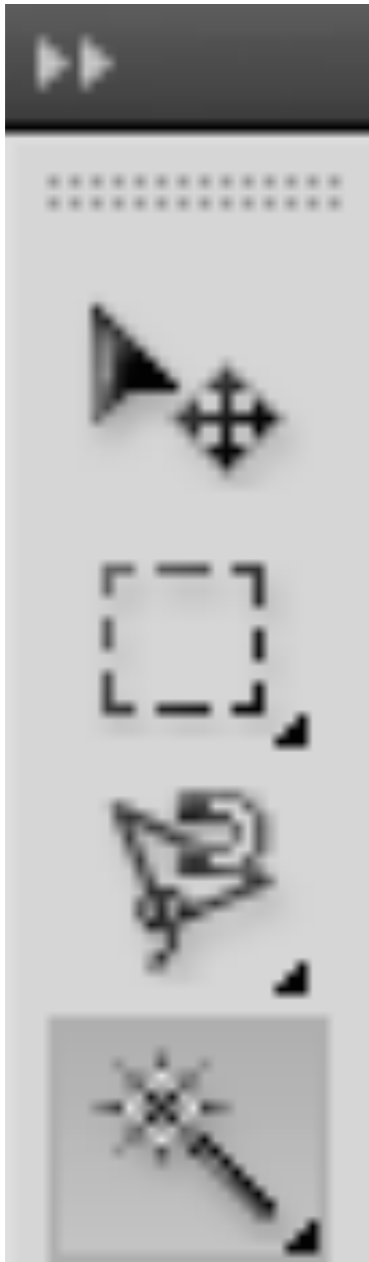
On the Weebly website click on Highschool > Graphic Design and look for the Google drive folder image, click on it to go to the Google drive folder. Click on Multiplicity > Student Photos to select an image to use for your project. Click on the photo then click the download button to download it. Drag it from your download folder to the Photoshop icon to open it in Photoshop.

# Rectangular Marquee Tool



Create a new layer on your tutorial background image. Go to your figure image and click on the rectangular marquee tool. Create a rectangle around the figure. Click command and C (CMD+C) to copy the selection. Click on your tutorial background image. Make sure you are on the new layer and click CMD+V to paste the selection on the new layer.

# Magic Wand Tool

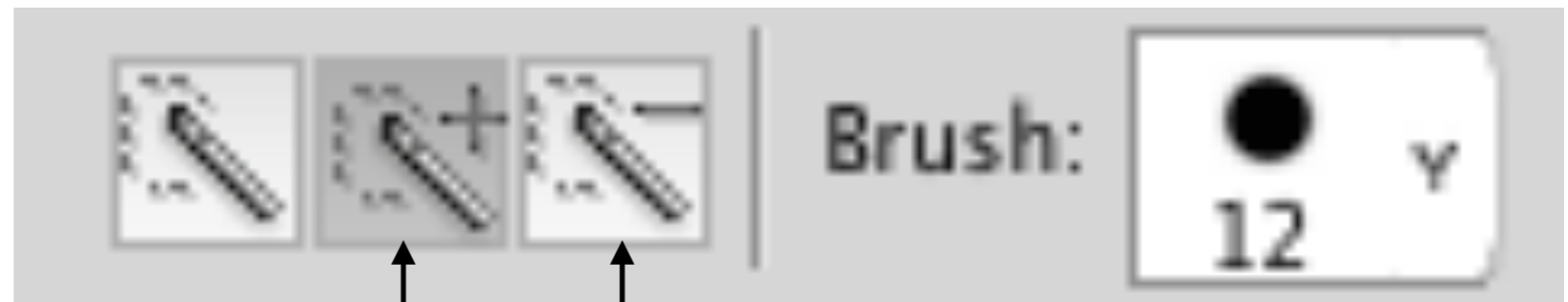


To select only the figure instead of the background this is called an inverse selection. To make an inverse selection click command, shift and I (CMD+SHIFT+I) at the same time.. Click on your tutorial background image. Make sure you are on the new layer and click CMD+V to paste the selection on the new layer.



# Quick Selection Tool

The quick selection tool adds or subtracts from selection. Add or subtract missing or needed items of the image.

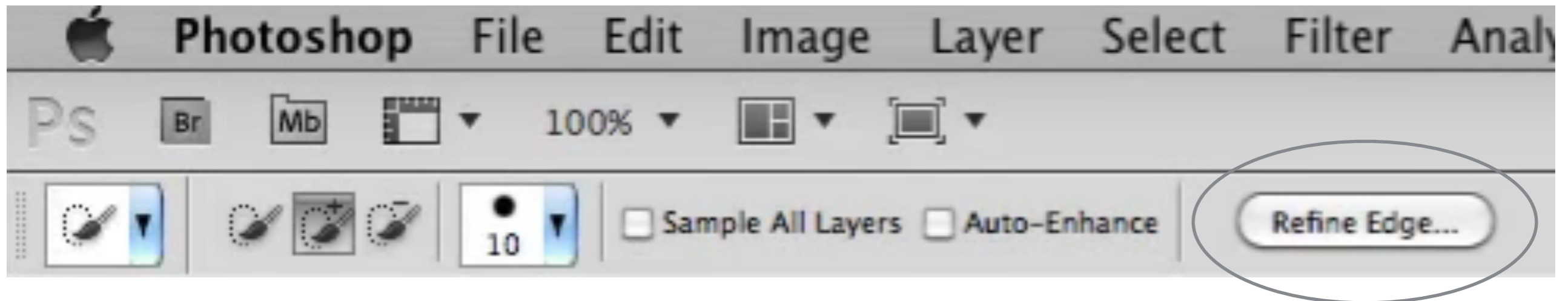


Adds

Subtracts

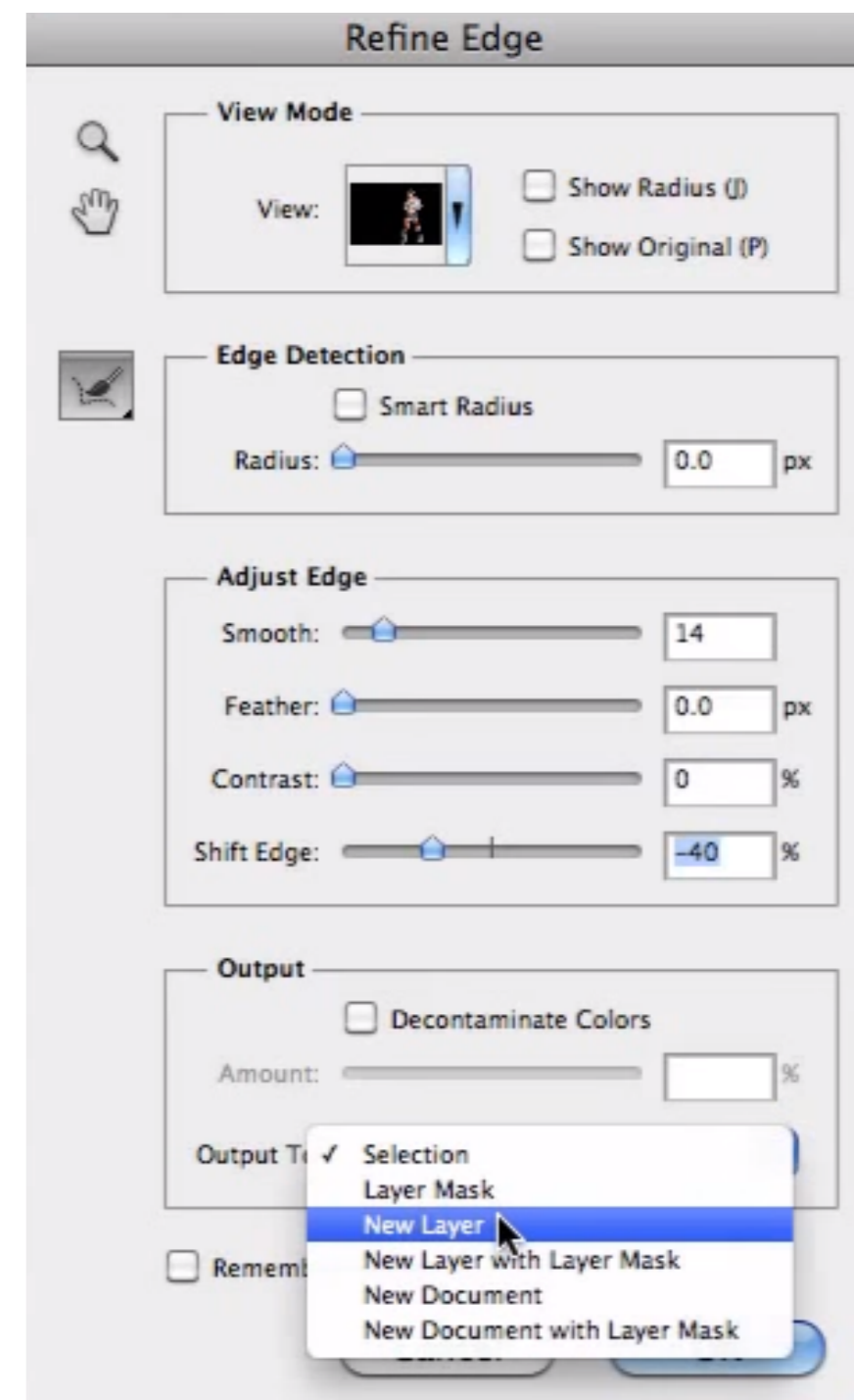
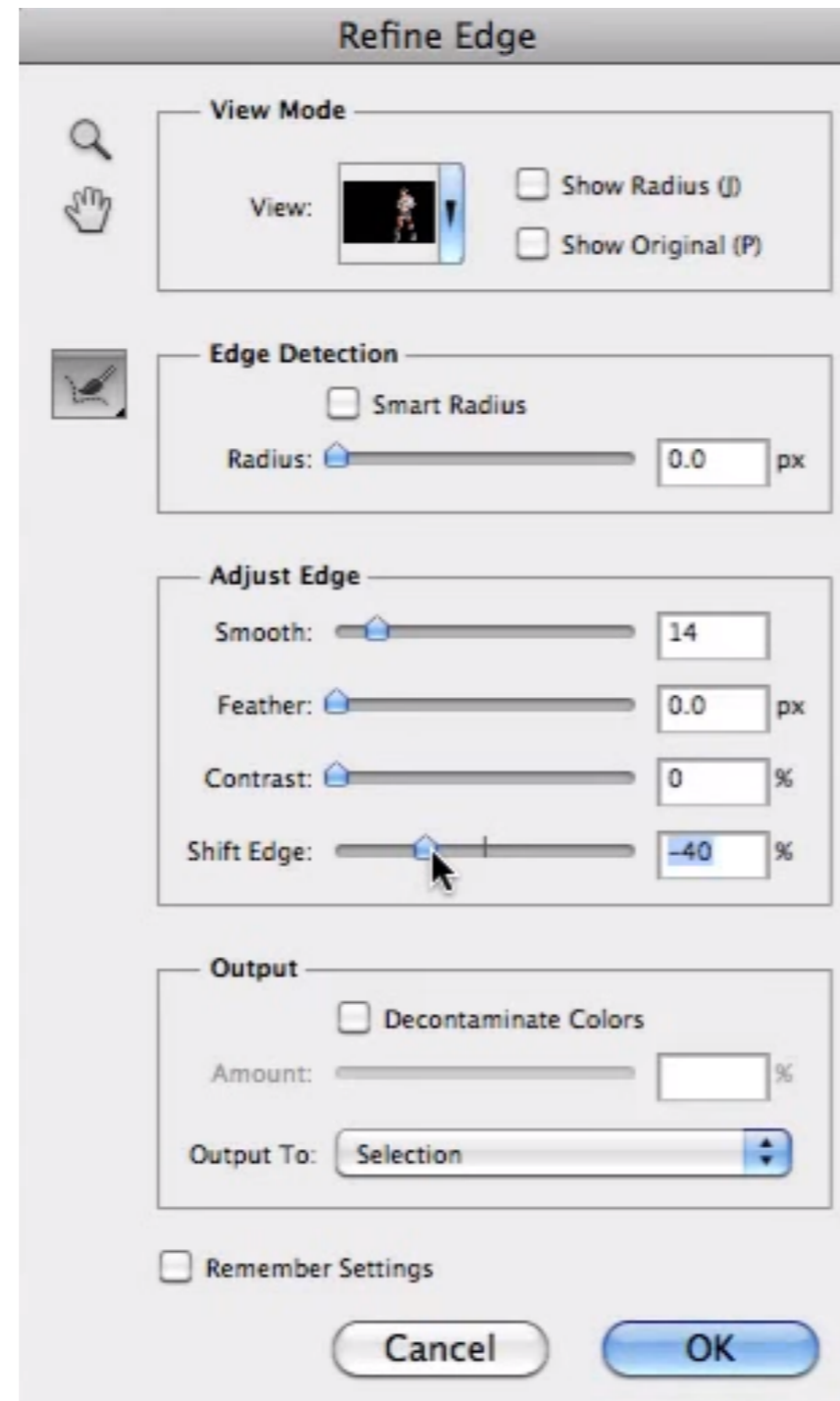
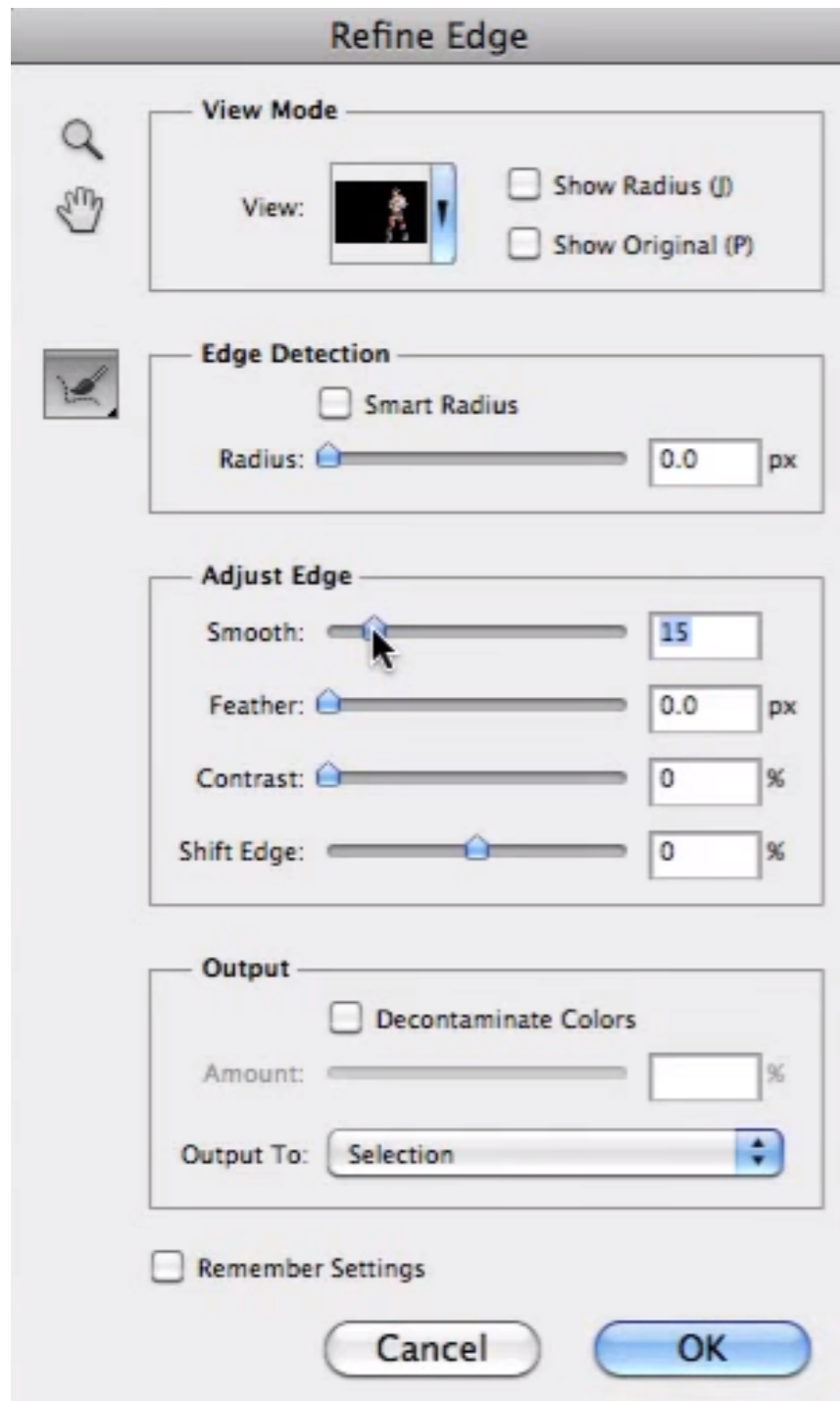
Changes the  
brush size

# Refine Edge

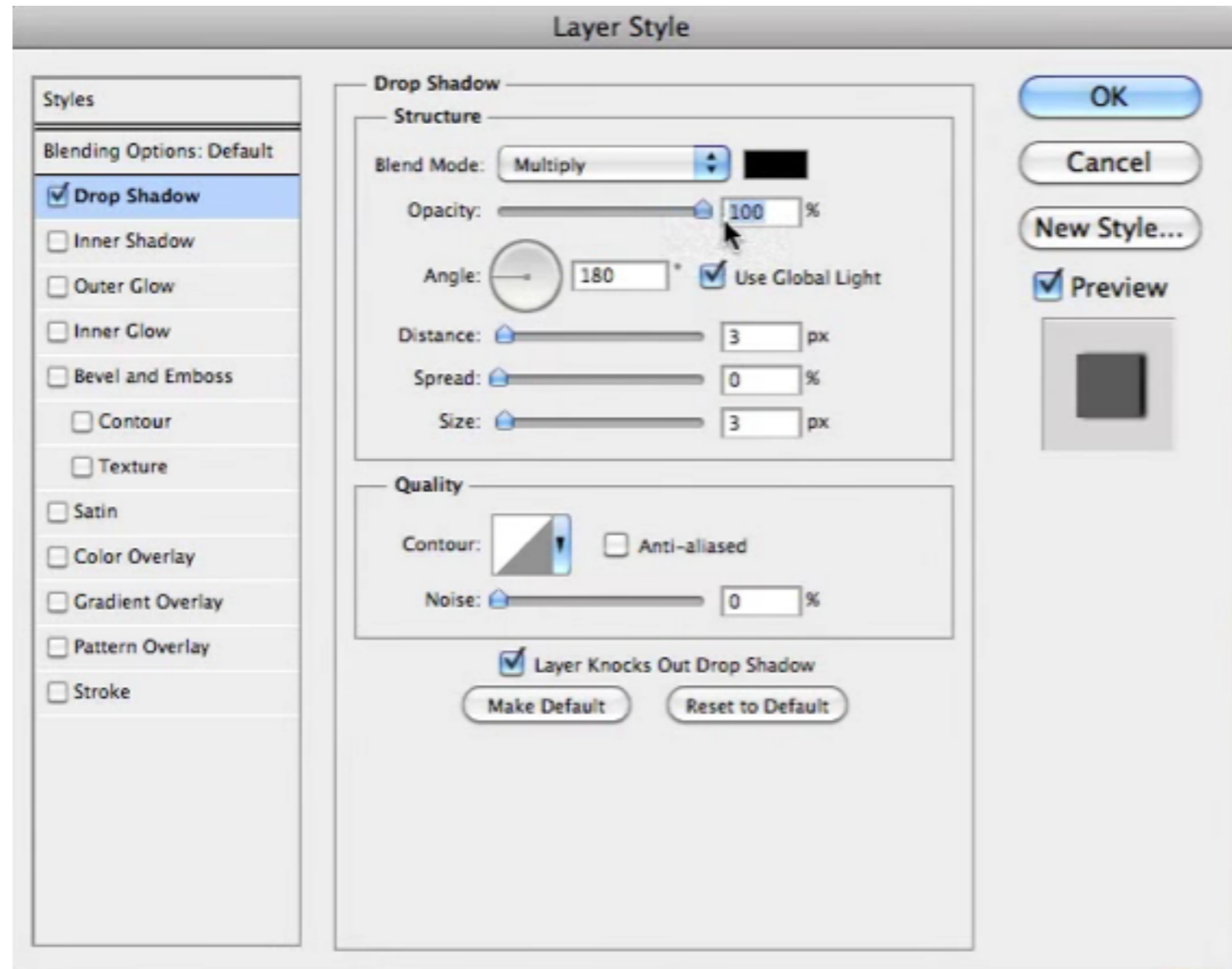
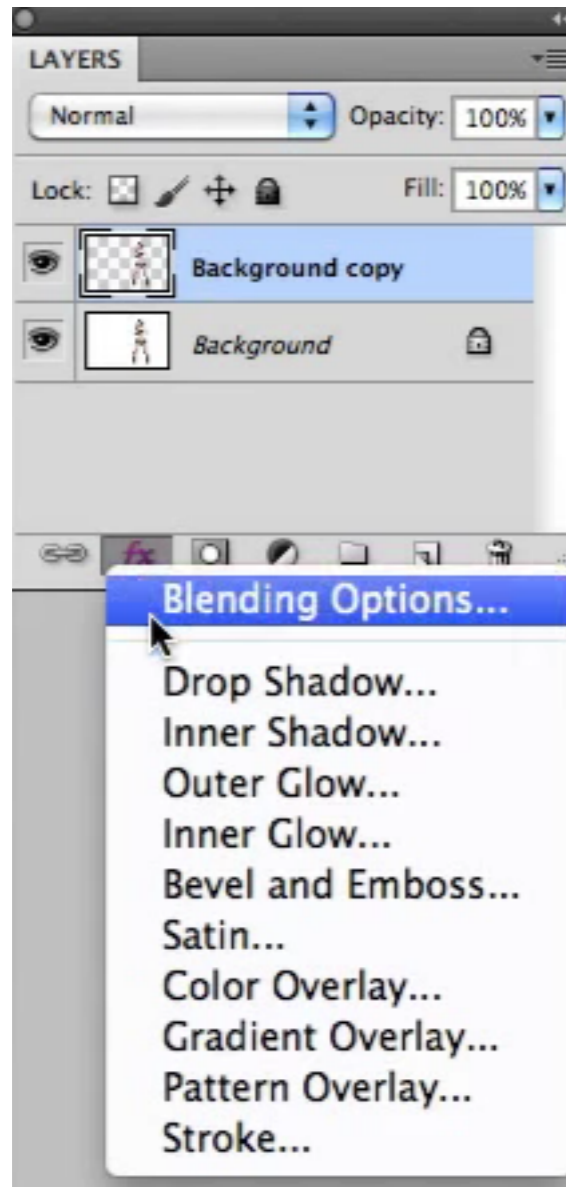


Select “smooth” under adjust edge to smooth out the edges around the figure. Then click on “shift edge” to eliminate any color left from the green screen or solid color background. Then change the size of the figure to fit the background image using free transform (CMD+T) See picture on next page for the previous steps.

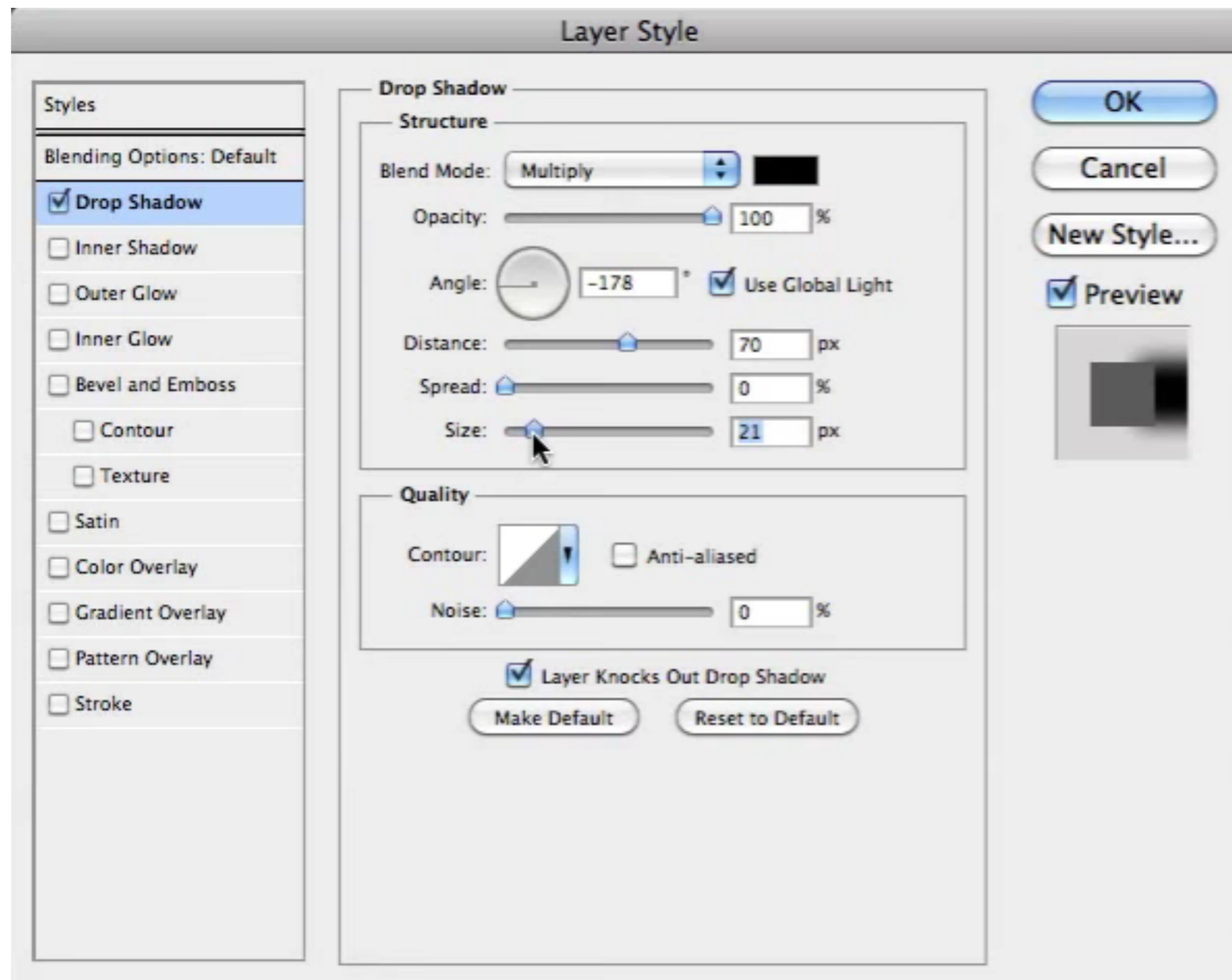
# Refine Edge



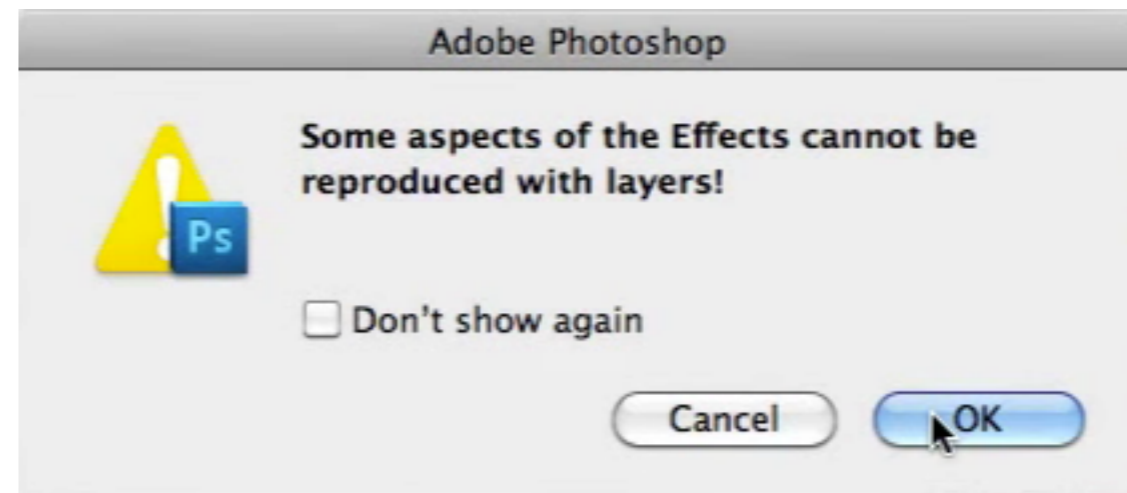
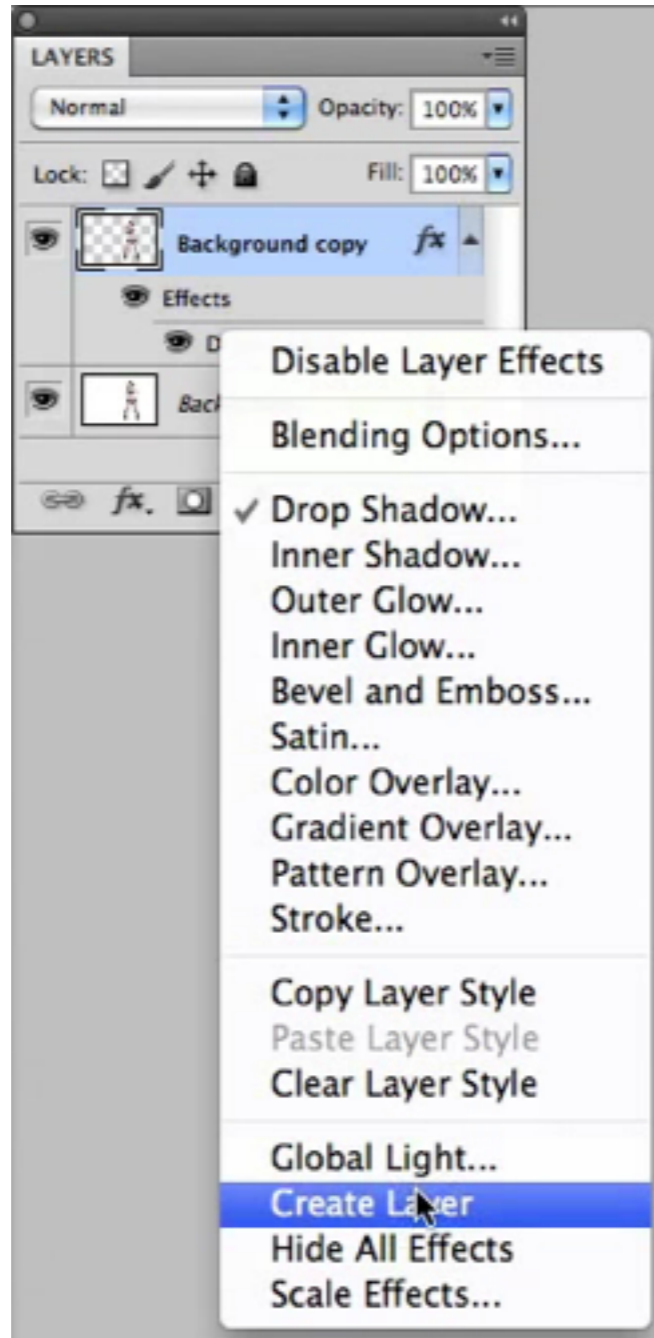
# Layer Style



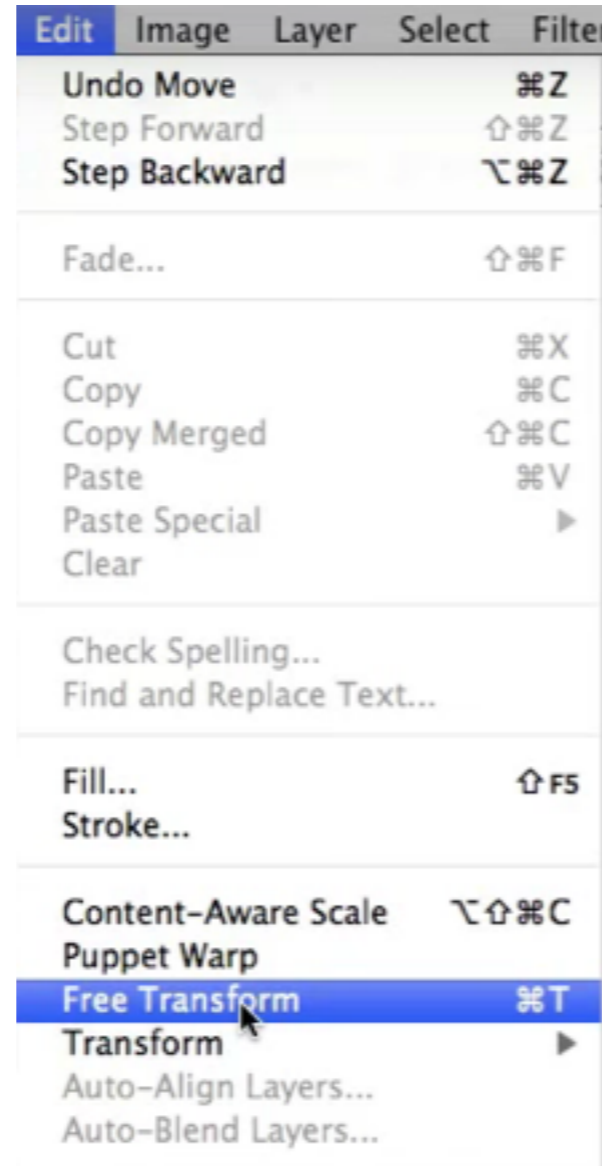
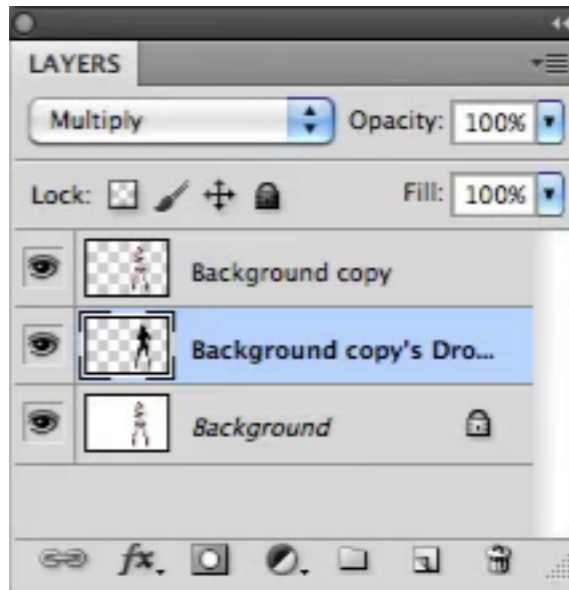
# Layer Style



# Create a Layer



# Free Transform



Use command (CMD)  
on the squares to  
manipulate the image.

Free Transform CMD+T